



**India Meteorological Department
(Ministry of Earth Sciences)**

BULLETIN NO. 89 (ARB/01/2023)

TIME OF ISSUE: 1330 HOURS IST

DATED: 17.06.2023

FROM: INDIA METEOROLOGICAL DEPARTMENT (FAX NO. 24643965/24699216/24623220)

TO: CONTROL ROOM, NDM, MINISTRY OF HOME AFFAIRS (FAX.NO. 23093750)

CONTROL ROOM NDMA (FAX.NO. 26701729)

CABINET SECRETARIAT (FAX.NO.23012284, 23018638)

PS TO HON'BLE MINISTER FOR S & T AND EARTH SCIENCES (FAX NO.23316745)

SECRETARY, MOES (FAX NO. 24629777)

H.Q. (INTEGRATED DEFENCE STAFF AND CDS) (FAX NO. 23005137/23005147)

DIRECTOR GENERAL, DOORDARSHAN (23385843)

DIRECTOR GENERAL, AIR (23421105, 23421219)

PIB MOES (FAX NO. 23389042)

UNI (FAX NO. 23355841)

D.G. NATIONAL DISASTER RESPONSE FORCE (NDRF) (FAX NO. 26105912, 2436 3260)

DIRECTOR, PUNCTUALITY, INDIAN RAILWAYS (FAX NO. 23388503)

CHIEF SECRETARY, RAJASTHAN (FAX NO. 0141-2227114)

CHIEF SECRETARY, GUJARAT (FAX NO. 079-23250305)

CHIEF SECRETARY, DAMAN & DIU (FAX NO. 0260-2230775)

CHIEF SECRETARY, DADRA & NAGAR HAVELI (FAX NO. 0260-2645466)

Sub: Deep Depression (Remnant of Cyclonic Storm 'Biparjoy') over Southwest Rajasthan and adjoining Gujarat

The Deep Depression (Remnant of Cyclonic Storm 'Biparjoy') over Southwest Rajasthan adjoining Gujarat and Southeast Pakistan moved northeastwards with a speed of 17 kmph during past 6-hours and lay centered at 1130 hours IST of today, the 17th June, 2023 over Southwest Rajasthan and adjoining Gujarat near latitude 25.3°N and longitude 71.9°E, about 70 km southeast of Barmer and 160 km southwest of Jodhpur.

It is very likely to move east-northeastwards and weaken into a Depression during next 06 hours. Thereafter, it is very likely to continue to move east-northeastwards and maintain the intensity of Depression till forenoon of 18th June.

Forecast track and intensity are given below:

Date/Time(IST)	Position (Lat. °N/ long. °E)	Maximum sustained surface wind speed (Kmph)	Category of cyclonic disturbance
17.06.23/1130	25.3/71.9	50-60 Gusting To 70	Deep Depression
17.06.23/1730	25.6/72.4	45-55 Gusting To 65	Depression
17.06.23/2330	25.9/73.0	40-50 Gusting To 60	Depression
18.06.23/0530	26.2/73.8	35-45 Gusting To 55	Depression

Warnings:

(i) Heavy Rainfall warning:

- Light to moderate rainfall at most places with isolated heavy to extremely heavy rainfall is likely over south Rajasthan and isolated heavy to very heavy rainfall over adjoining north Gujarat region & Kutch on 17th June.

(ii) Wind warning:

Wind Warning for South Rajasthan and adjoining north Gujarat

- Squally wind speed reaching 45-55 kmph gusting to 65 kmph till night of 17th June and decrease thereafter becoming 35-45 kmph gusting to 55 kmph by morning of 18th June.

(iii) Damage expected over Kachchh and North Saurashtra districts during next 06 hours:

- Minor damage to loose / unsecured structures.
- Some breaches in Kutcha road due to flooding.
- Minor damage to Banana trees and near coastal agriculture due to salt spray. Damage to ripe paddy crops.
- Minor damage to Kutcha embankments.

(iv) Observed Heavy Rainfall 17th June, 2023 (0830 hours IST):

Gujarat: Okha (dist Devbhoomi Dwarka) 23, Anjar (dist Kutch) 22, Mandvi(k) (dist Kutch) 22, Bhachau (dist Kutch) 21, Mundra (dist Kutch) 19, Rapar (dist Kutch) 19, Nakhatrana (dist Kutch) 17, Kandla New (dist Kutch) 17, Jamnagar (dist Jamnagar) 16, Gandhidham (dist Kutch) 15, Khambhalia (dist Devbhoomi Dwarka) 13, Bhuj (dist Kutch) 13, Kandla Airport (dist Kutch) 12, Lodhika (dist Rajkot) 11, Lakhpat (dist Kutch) 10, Kalavad (dist Jamnagar) 10, Chuda (dist Surendranagar) 10, Wankaner (dist Morbi) 9, Jodia (dist Jamnagar) 9, Rajkot (dist Rajkot) 9, Tankara (dist Morbi) 8, Morbi (dist Morbi) 8, Dhrol (dist Jamnagar) 7, Abdasa (dist Kutch) 7, Targhadia_aws (dist Rajkot) 7, Chotila (dist Surendranagar) 7, Halvad (dist Morbi) 7, Jamnagar_kvK Aws (dist Jamnagar) 7.

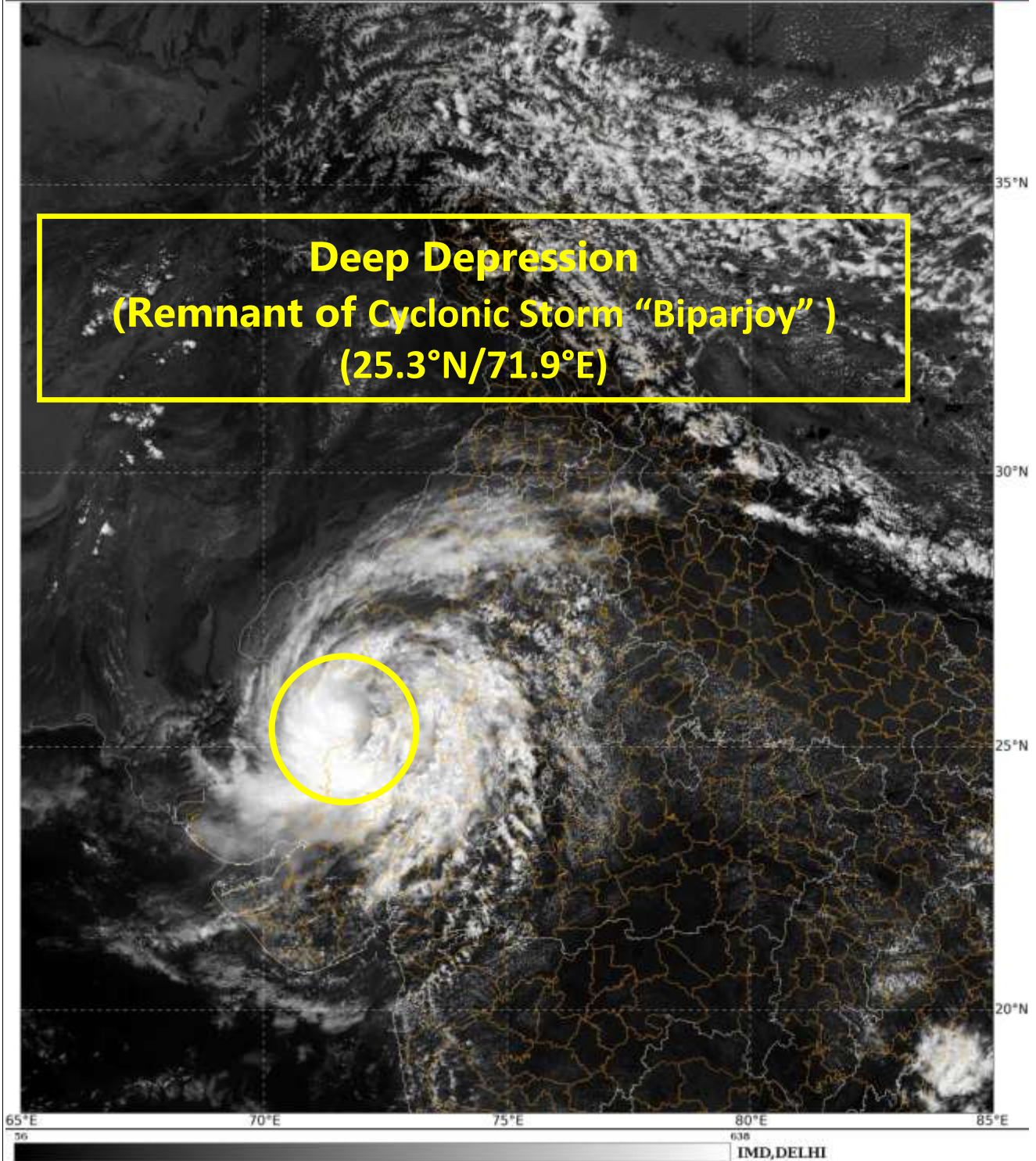
Rajasthan: Mt. Abu (Sirohi), 21, Sedwa (Barmer) 14, Mounntabu Tehsil (Sirohi) 13, Raniwada (Jalore) 11, Bidasra (Churu) 8 and Reodar (Sirohi) 7cm

The system is under continuous surveillance and the next message will be issued at 2030 hours IST of today, the 17th June, 2023.

(Ananda Kumar Das)
Scientist F, Cyclone Warning Division, New Delhi

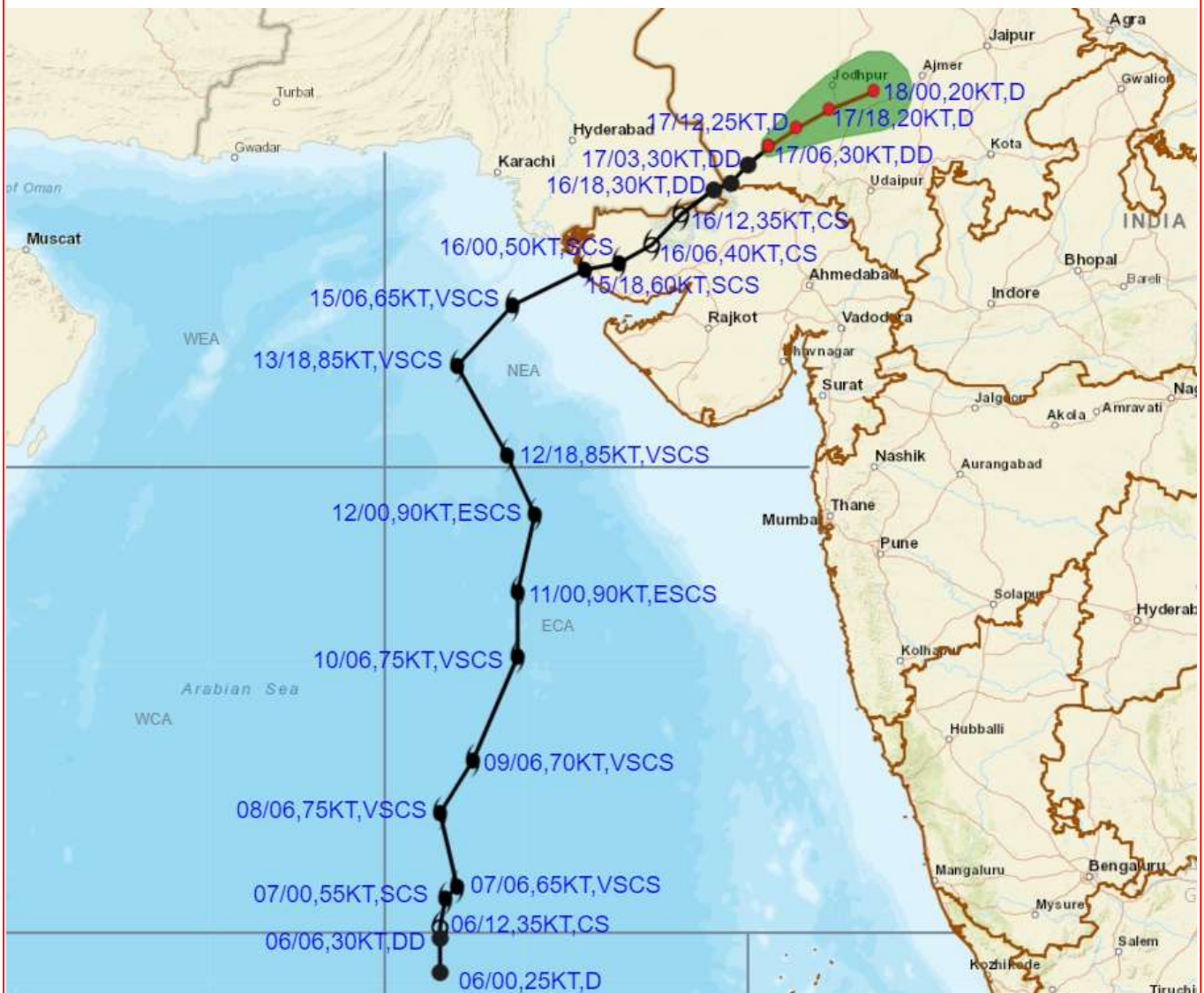
Copy to: ACWC Kolkata/ ACWC Chennai/ CWC Bhubaneswar/CWC Visakhapatnam/CWC Ahmedabad/ MO Port Blair/MC Raipur/MC Bhopal/MC Hyderabad/RMC Nagpur

LEGEND: Heavy Rainfall: 64.5 to 115.5mm, **Very Heavy Rainfall:** 115.6 to 204.4mm **Most Places:** more than 76% of total stations, **Isolated Places:** Less than 25% of total





OBSERVED AND FORECAST TRACK ALONGWITH CONE OF UNCERTAINTY OF DEEP DEPRESSION (REMANANT OF CYCLONIC STORM BIPARJOY) OVER SOUTHWEST RAJASTHAN AND ADJOINING GUJARAT BASED ON 0600 UTC (1130 IST) OF 17TH JUNE 2023.

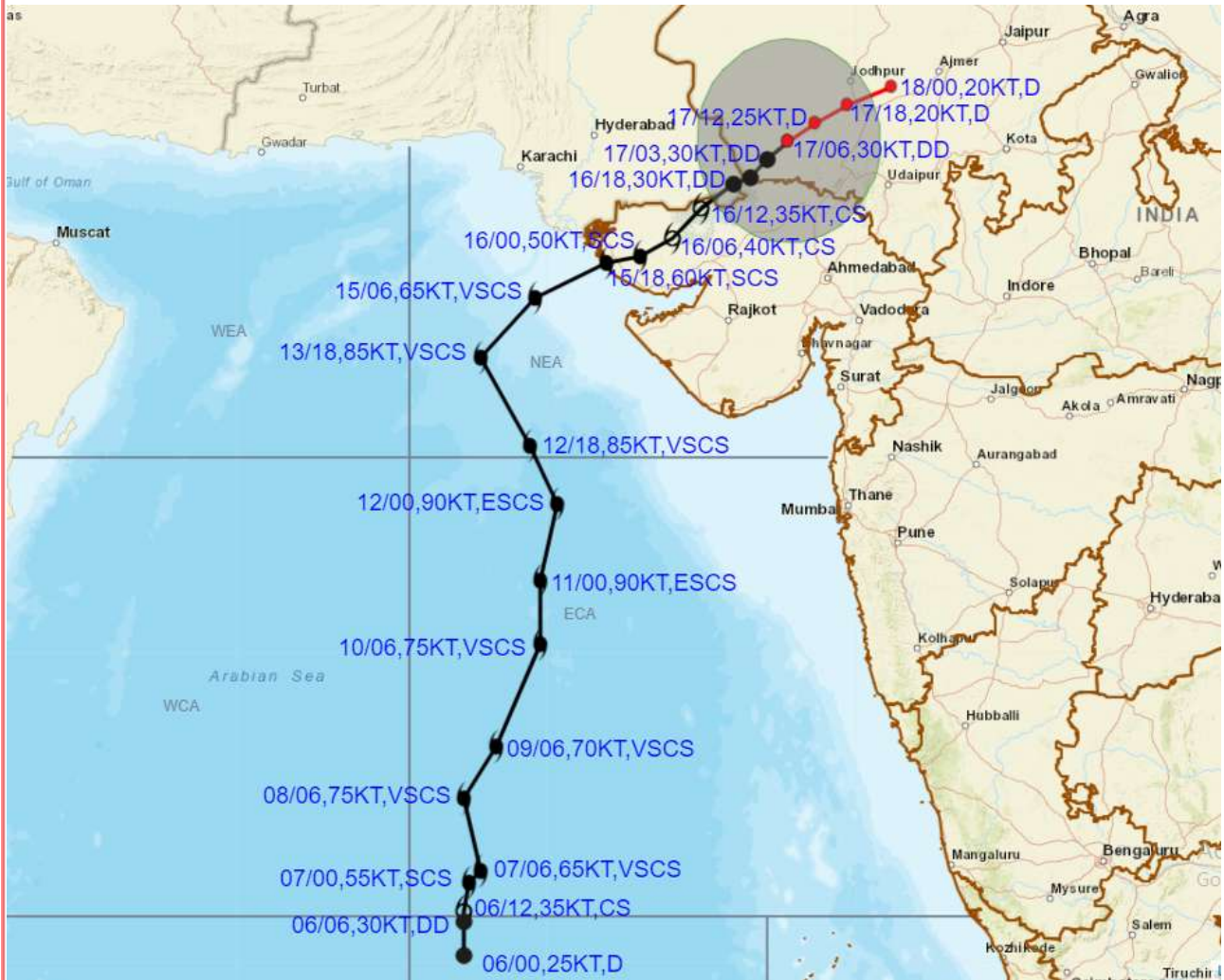


DATE/TIME IN UTC
 IST=UTC + 0530
 L: LOW PRESSURE AREA
 WML: WELL MARKED LOW PRESSURE AREA
 D: DEPRESSION (17-27 KT)
 DD: DEEP DEPRESSION (28-33 KT)
 CS: CYCLONIC STORM (34-47 KT)
 SCS: SEVERE CYCLONIC STORM (48-63KT)
 VSCS: VERY SEVERE CYCLONIC STORM (64-89 KT)
 ESCS: EXTREMELY SEVERE CYCLONIC STORM (90-119 KT)
 SuCS: SUPER CYCLONIC STORM (\geq 120 KT)

- LESS THAN 34 KT
- 34-47 KT
- \geq 48 KT
- OBSERVED TRACK
- FORECAST TRACK
- CONE OF UNCERTAINTY



OBSERVED AND FORECAST TRACK ALONGWITH QUADRANT WIND DISTRIBUTION OF DEEP DEPRESSION (REMANANT OF CYCLONIC STORM BIPARJOY) OVER SOUTHWEST RAJASTHAN AND ADJOINING GUJARAT BASED ON 0600 UTC (1130 IST) OF 17TH JUNE 2023.



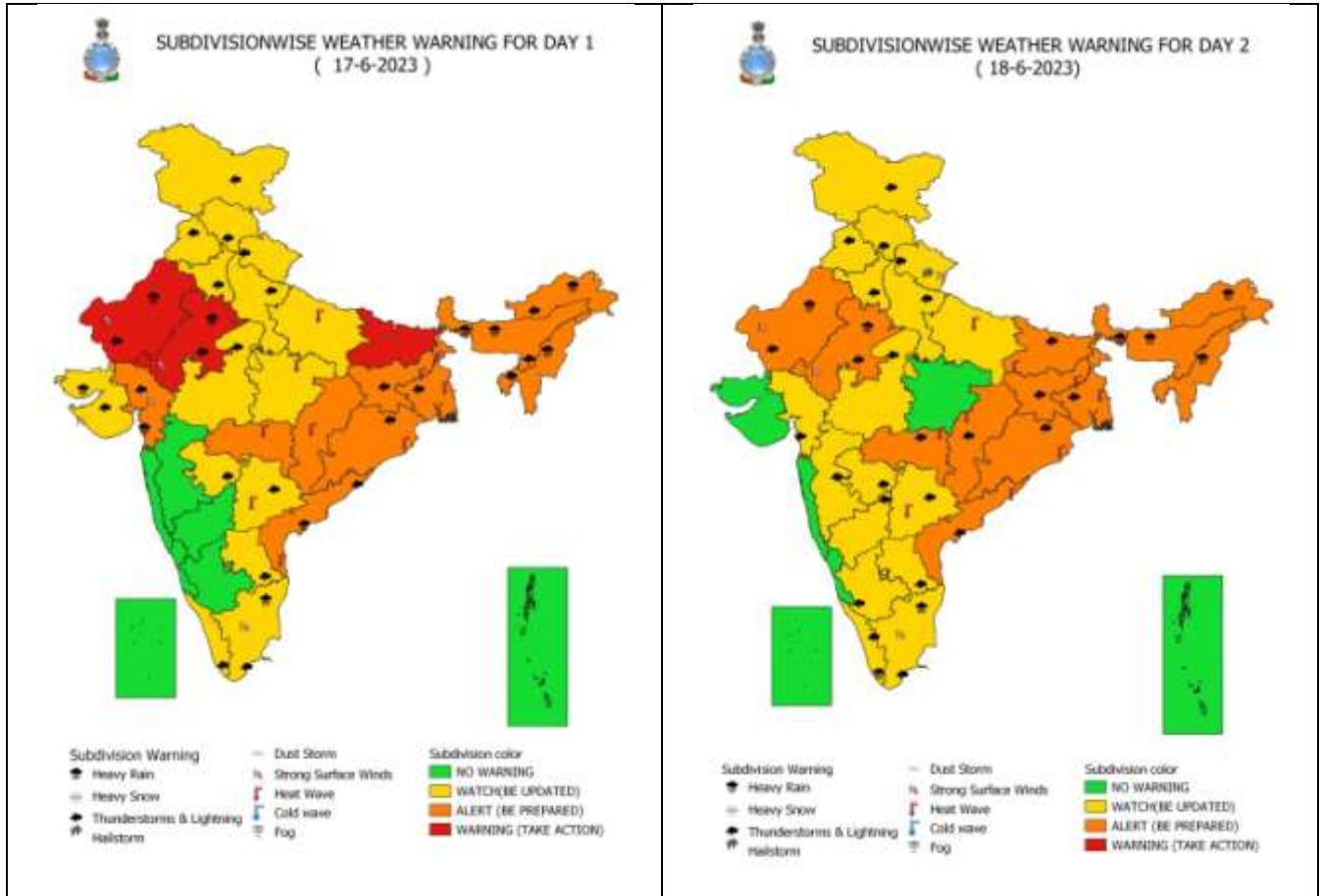
DATE/TIME IN UTC
 IST=UTC + 0530
 L: LOW PRESSURE AREA
 WML: WELL MARKED LOW PRESSURE AREA
 D: DEPRESSION (17-27 KT)
 DD: DEEP DEPRESSION (28-33 KT)
 CS: CYCLONIC STORM (34-47 KT)
 SCS: SEVERE CYCLONIC STORM (48-63KT)
 VSXS: VERY SEVERE CYCLONIC STORM (64-89 KT)
 ESCS: EXTREMELY SEVERE CYCLONIC STORM (90-119 KT)
 SuCS: SUPER CYCLONIC STORM (≥ 120 KT)

- LESS THAN 34 KT
- 34-47 KT
- ⦿ ≥ 48 KT
- OBSERVED TRACK
- FORECAST TRACK
- ▲ CONE OF UNCERTAINTY
- AREA OF MAXIMUM SUSTAINED WIND SPEED:
- 28-33 KT (52-61 KMPH)
- 34-49 KT (62-91 KMPH)
- 50-63 KT (92-117 KMPH)
- ≥ 64 KT (≥118 KMPH)

IMPACT OVER THE SEA

MSW (knot/kmph)	Impact	Action
28-33 (52-61)	Very rough seas	Total suspension of fishing operations
34-49 (62-91)	High to very high seas	Total suspension of fishing operations
50-63 (92-117)	Very high seas	Total suspension of fishing operations
≥ 64 (≥118)	Phenomenal	Total suspension of fishing operations

All India Heavy Rainfall Warning for 17th to 18th June 2023



District-wise Heavy Rainfall Warning Maps for 17th June



District-wise Heavy Rainfall Warning Maps for 17th to 18th June for Rajasthan

